

# ADtool - manage Microsoft Active Directory objects

## Introduction

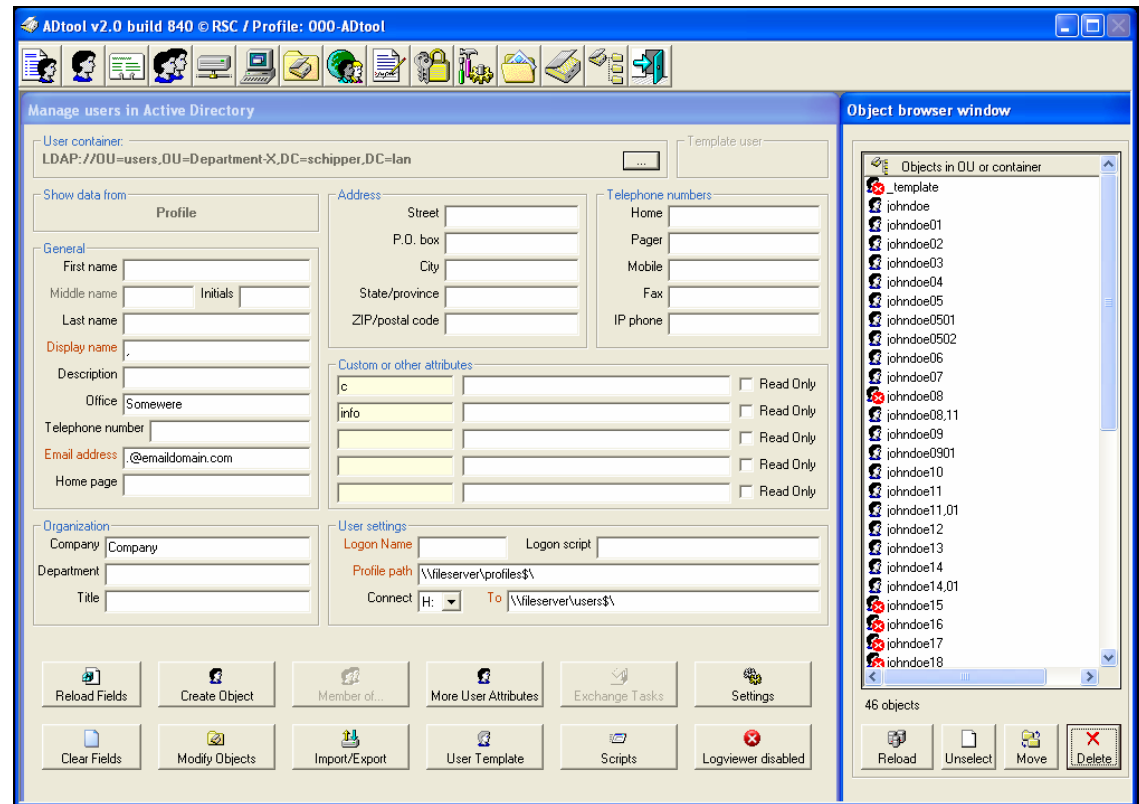
Use ADtool as an extension on the Microsoft Active Directory Users and Computer snap in. Now you will be able to perform many tasks that you cannot do with the Microsoft Active Directory tools shipped with the server platforms. ADtool uses the ADSI interface and is safe to use for any Active Directory implementation.

## How to use

ADtool is a multipurpose GUI based Active Directory tool for a wide range of operations from creating a single user object until Active Directory and Exchange Server migrations. Many predefined functions are easy to use for administrators and migration engineers.

## Features

- Advanced Search and Replace to find and correct attribute values (very handy to correct information which is not allowed for Microsoft Exchange 2007 Server).
- Fully automated User creation (including security groups, mailbox, home folder and all settings needed).
- Detailed logging for all actions, use the Logviewer to see what ADtool does in detail.
- Restriction policies that allow you to limit functionality for helpdesk personnel.
- Integration with Microsoft Exchange Server.
- Easy group member management: Copy and Paste group members from anywhere in ADtool.



## Supported configurations

ADtool will support:

- Microsoft Windows Active Directory versions 2000, 2003 and 2008.
- Microsoft Exchange Server 2003 using CDO environment (which needs to be installed separately).
- Microsoft Exchange Server 2007 using Exchange Management Shell (which needs to be installed separately).

# ADtool - manage Microsoft Active Directory objects

## More features

- Bulk import and export from objects (also groups and their members) done by using csv files which are able to edit using Microsoft Excel.
- Especially for file server, shares can be exported and imported, in case of file server migration or creating volume objects from existing shares in Active Directory.
- Enhanced password generator is included in the user management window. Random passwords can be generated for new or existing users. A new created user can be copied to the Windows clipboard for communication via email.
- For Exchange server, grant sent on behalf of permission to a mail enabled group in stead of a user.
- Especially for mail migrations, bulk set and reset mail forwarders.

## System requirements

Microsoft Windows Desktop 2000/XP/VISTA  
Microsoft Windows Server 2000/2003/2008

Free hard drive space at least 30 Mbytes  
Display at least 1024 \* 768 resolution

Use ADtool on:

- Desktop computers (no domain membership is needed)
- Server computers
- Terminal Server computers for sharing administrative software with multiple administrators.

